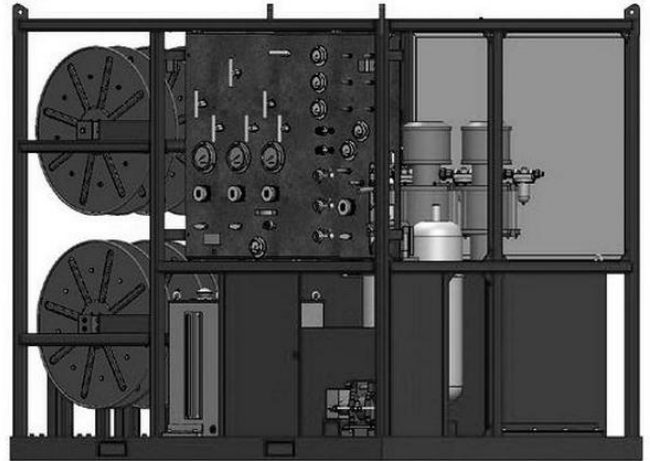




Grease and Hydraulic Control Module

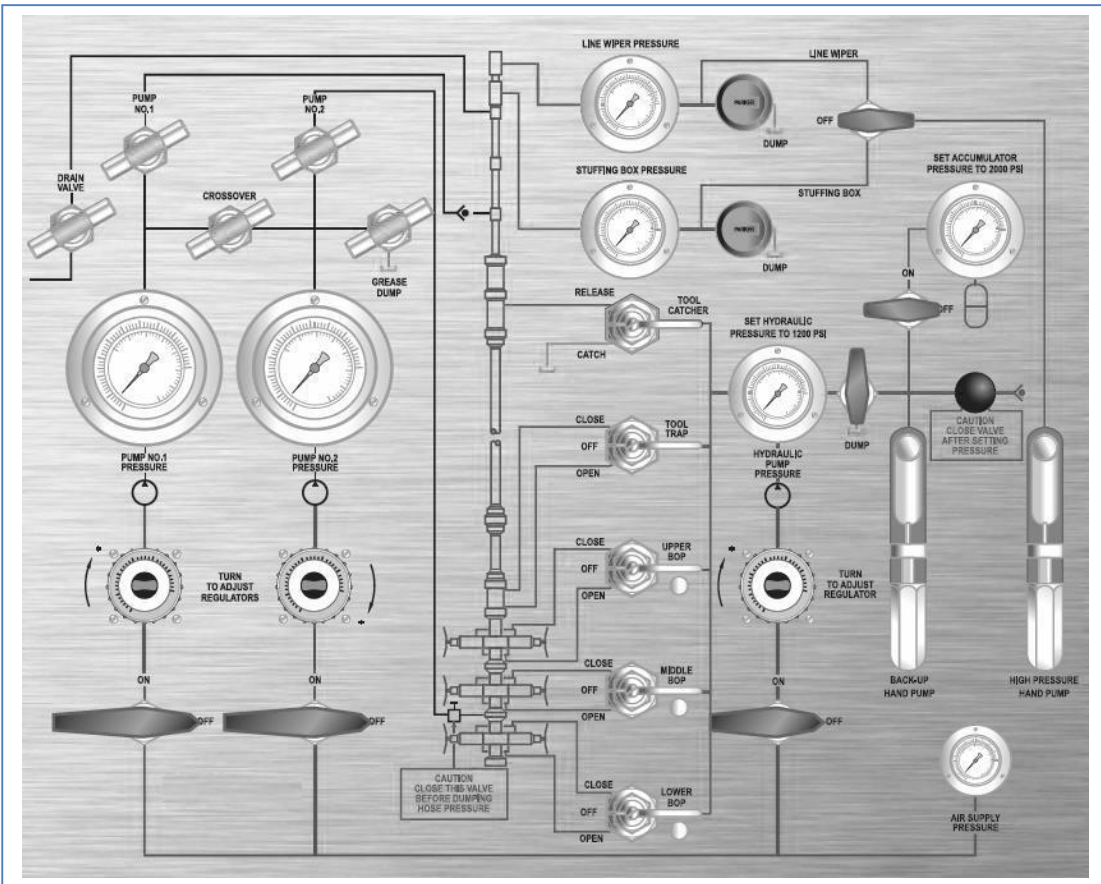
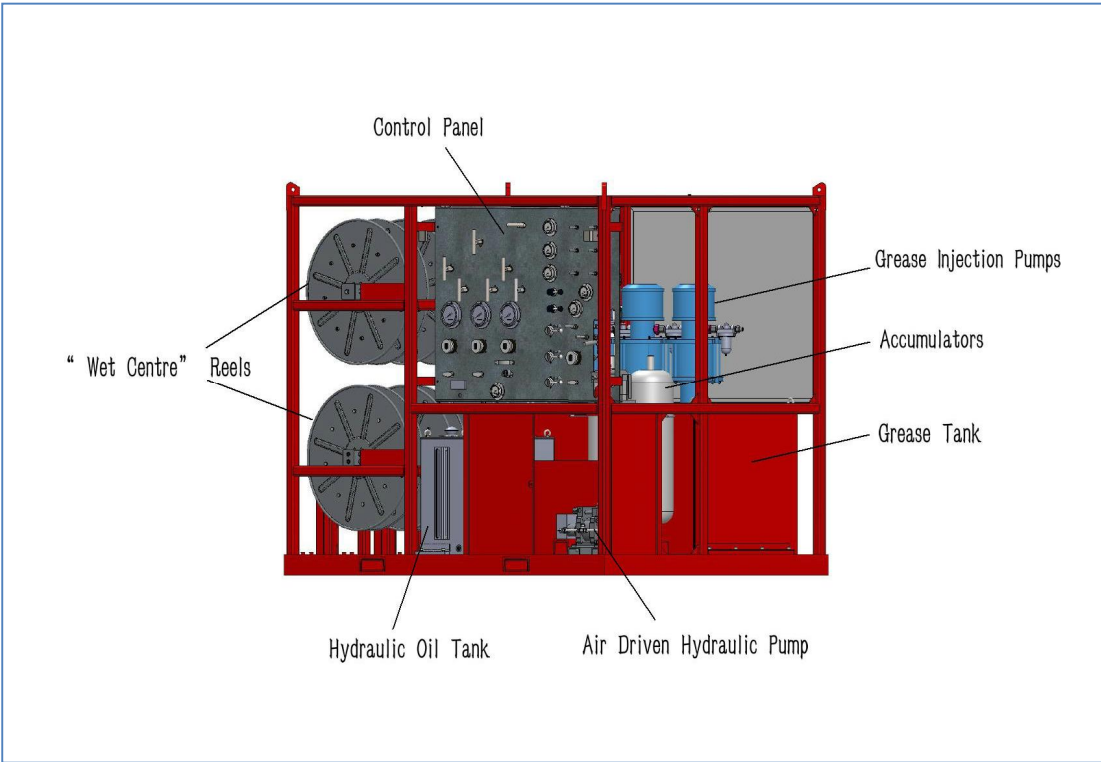
The Grease and Hydraulic Control Module is designed to mainly supply hydraulic pressure to hydraulic operation of wireline Grease Injection Control Head, Tool Catcher, Tool Trap, Wireline BOP and in the mean time to supply high pressure sealing grease to the Grease Injection Control Head and the BOP. The Module is mainly composed of the stainless steel Control Panel, various of control Switches and Valves, Manometer, Pipes, Grease Injection Pumps, Air Driven Hydraulic Pump and Frame etc. The Hoses of the Grease and Hydraulic Control Module provided can make the operators to work safely away from the high pressure wellhead about 15 meters.



The main hydraulic pressure elements, switches and some grease injection hoses of the Control Module are imported from famous foreign brands, thereby guaranteeing the reliability and the stability on application of the whole system. Normally, Grease and Hydraulic Control Module only provide together with our Wireline PCE, not sold separately. If the clients need to our Control Module to meet with other companies' Wireline PCE, it is need confirm several parameters such as target Quantity, hydraulic port type, grease injection port type and working pressure etc. of main parts, because we must ensure that the Control Module fit with your Wireline PCE properly.

Feature

- 1) Steel Frame and Stainless Steel Control Panel.
- 2) Are driven Hydraulic Pump.
- 3) High quality import Grease Injection Pump.
- 4) Hose on "Wet Centre" Reels.
- 5) 5K, 10K and 15K for selective.
- 6) Convenient for transport.



Control Panel



Main Parameter

- 1) Part List of the Wireline PCE
- 2) Quantity of hydraulic targets
- 3) Quantity of grease injection targets
- 4) Quick Joint type and size of each targets
- 5) Working Pressure
- 6) Service Temperature



Grease and Hydraulic Control Module									
Model	Working Pressure	Qty. Of Grease Injection Pumps	Ratio Of Grease Injection Pumps	Volume Of Grease Tank	Volume Of Hydraulic Oil Tank	Max. Testing Pressure	Qty. Of Air Driven Hydraulic Pump	Accumulators	Service Temperature
5K-series	5000Psi	2	82:1	170L	40L	7500Psi	1	1 x 16L	-20°F~+131°F (-29°C~+55°C) Or As Required
10K-series	10000Psi	2	169:1	300L	60L	15000Psi	1	2 x 10L	
15K-series	15000Psi	3	225:1	450L	90L	22500Psi	1	2 x 16L	

Note

- 1) Data on sheet are normal parameters, details will base on inquiry.
- 2) Additional size and configuration available on request.



Normal Guarantee Period

12 months after the clients received the Equipment
or 13 months after the commodity be shipped from Chinese Harbor.



Information Required When Inquiry

If you will purchase the whole Wireline PCE,
please refer to the [Information Required When Inquiry](#) in Chapter 《Wireline PCE》 .

If you purchase the Grease and Hydraulic Control Module separately, the **Main Parameter** information above mentioned will be asked.

Subject to change without notice